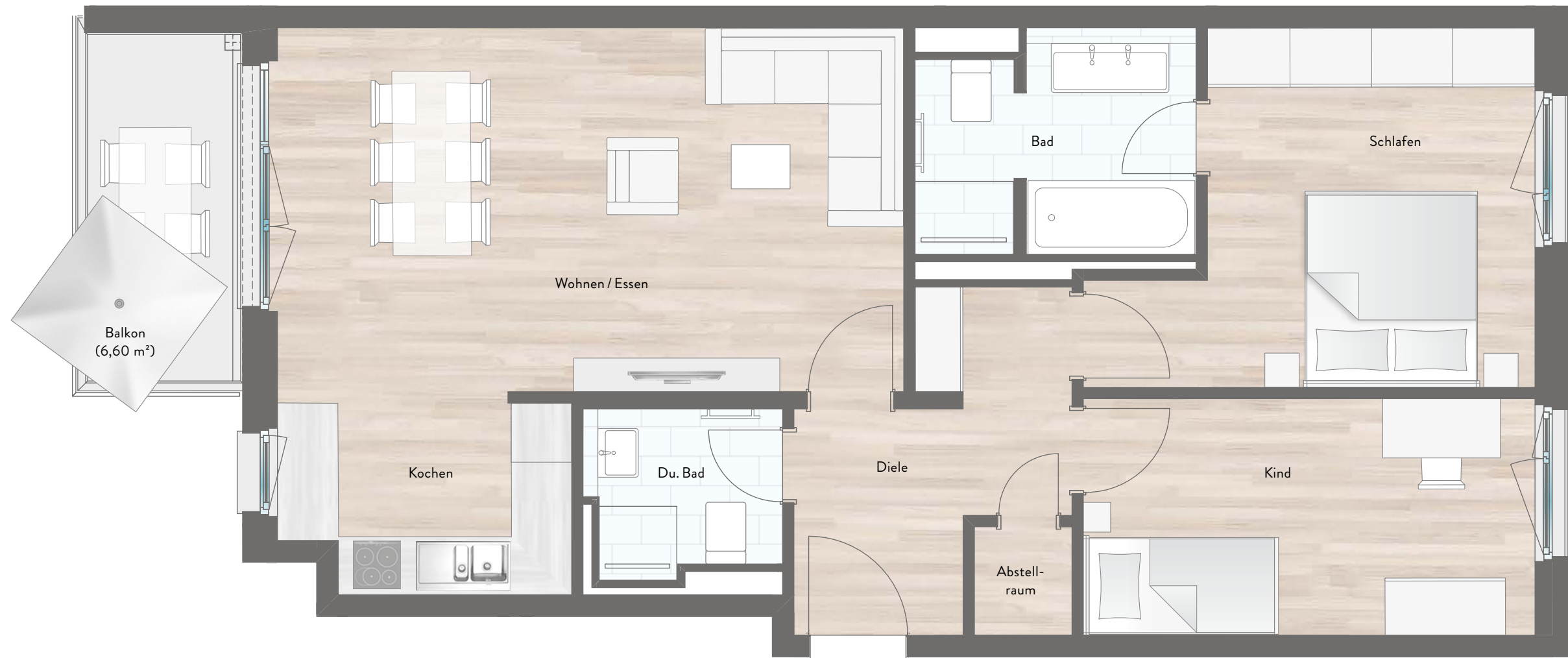


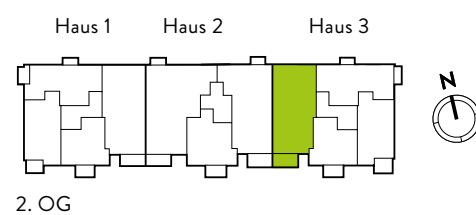
WOHNUNG 3.08

3 Zimmer | Haus 3
 2. OG | 75,25 m² Wfl. | 78,55 m² Nfl.



2. OG

| RAUM | Wfl. |
|----------------|----------------------------|
| Wohnen / Essen | 24,18 m ² |
| Kochen | 5,52 m ² |
| Schlafen | 13,62 m ² |
| Kind | 11,10 m ² |
| Diele | 7,08 m ² |
| Bad | 6,11 m ² |
| Du. Bad | 3,24 m ² |
| Abstellraum | 1,10 m ² |
| Balkon (1/2) | 3,30 m ² |
| GESAMT | 75,25 m² |



2. OG

Maßstab 1 : 50 - 1 cm = 0,5 m

